

# WATER CANADA

## Toxic Detection Researchers Tackle Emerging Contaminants

**Fukushima's Radioactive Plume Reaches Canada**  
(page 10)

**Keeping Big Pharma Out of Waterways**  
(page 16)

**Breweries Rethink the Concept of Waste**  
(page 28)



**INSIDE:**

**WC  
BUYER'S  
GUIDE  
2015**

(page 33)

## FEATURES

### 10 Shock Waves

Fukushima's radioactive plume reaches Canadian waters.

BY SAUL CHERNOS

### 16 I Don't Flush

New PSAs aim to encourage proper disposal of unused pharmaceuticals.

### 18 Too Careless

Canadians remain indifferent about the toxins they flush into water systems.

BY ANDREW FAZEKAS

### 32 Streamlining Approvals

A look at new protocols for performance verification.

BY JIM FERRERO AND JOHN NEATE

## WASTEWATER

### 14 Toxic Relationship

Why should we monitor the potential toxicity of contaminants in wastewater effluent?

BY EVE KRAKOW

## DRINKING WATER

### 22 The Fracking Point

The latest developments in shale gas drilling and potential effects on drinking water wells.

BY ERIN MURPHY-MILLS

## WATER RESOURCES

### 26 Without a Paddle

Documenting the failure and the potential of New Brunswick's Water Classification Program.

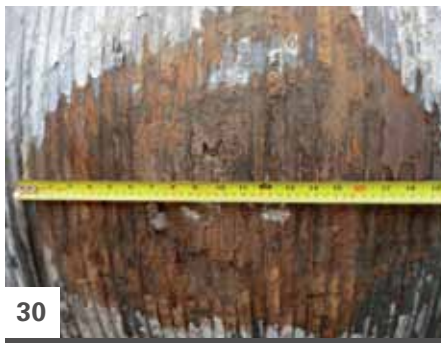
BY JON MACNEILL

## CONVEYANCE

### 30 Critical Pipelines

Montreal rolls out an inspection program to pinpoint problem areas in aging systems.

BY CAMERON WHITE



## ANNUAL BUYER'S GUIDE

33 A comprehensive directory of water products, services, and resources.

## COLUMNS

### 20 Groundbreakers

Does a "lab in a pill" exist?

BY CLARK KINGSBURY

### 24 Fine Print

Alberta First Nations sue Ottawa over unsafe drinking water.

BY DANIKA LITTLECHILD

### 28 Ask the Expert

It's time to rethink the concept of waste in Ontario's craft brewing industry.

BY SCOTT HARPER

### 50 Liquid Assets

What is Canada's role in water security?

BY JON FENNELL AND OKSANA KIELBASINSKI

### 52 Rules & Regs

A snapshot of our drinking water quality challenges.

BY KLAS OHMAN

### 58 H2Opinion

Ontario must strengthen its regulation of toxic substances.

BY NANCY GOUCHER

## DEPARTMENTS

### 5 Editor's Note

Confusion and clarity after Mount Polley.

BY RACHEL PHAN

### 6 Front

Ancient water, reader feedback, and a family fun giveaway.

### 8 Comment

ANKUR JAJOO writes about ways contaminants impact water and wastewater markets.

### 53 People & Events

Jobs, awards, contracts, and the latest in event coverage.