

Canadian Water Summit

Water-Land Nexus Panel

Fraser River Basin



Everyone lives in a Watershed

[illegible]

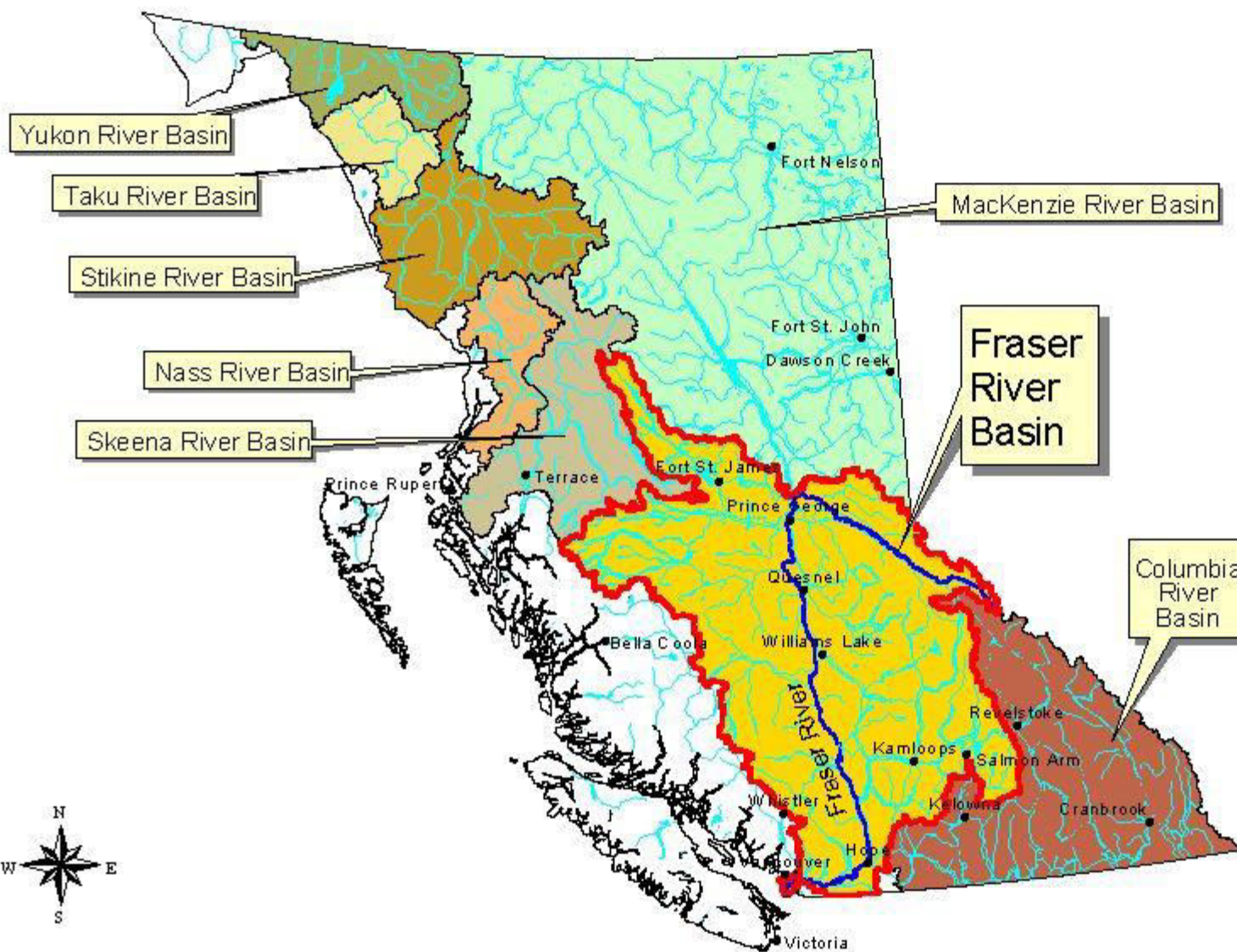
THE PACIFIC NORTHWEST



Along a coastline and bounded by
nearby continents and lakes, the
Pacific Northwest's waterfalls extend
from northern California to southern
Alaska, and extend to the high peaks
of the continental divide. This is the
land of salmon, tall trees and rapids.
These rivers and streams flow through
North America's temperate
rain forests into the Pacific Ocean.



Major River Basins of British Columbia: The Fraser River Basin



Legend

- Cities/Towns
-  Lakes
-  Rivers
-  Fraser River

Major River Basins

-  Fraser River
-  Columbia River
-  MacKenzie River
-  Nass River
-  Skeena River
-  Stikine River
-  Taku River
-  Yukon River

Data Source: Watershed Atlas 1:50,000
 Scale: as shown
 Projection: BC Albers
 Prepared By: Galland Institute for
 Environmental and Social Research
 For: Watershed Society of BC
 Date Prepared: Sept 03, 2003

Regions of the Fraser River Basin



Fraser River Basin



Legend

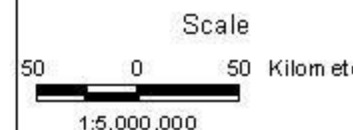
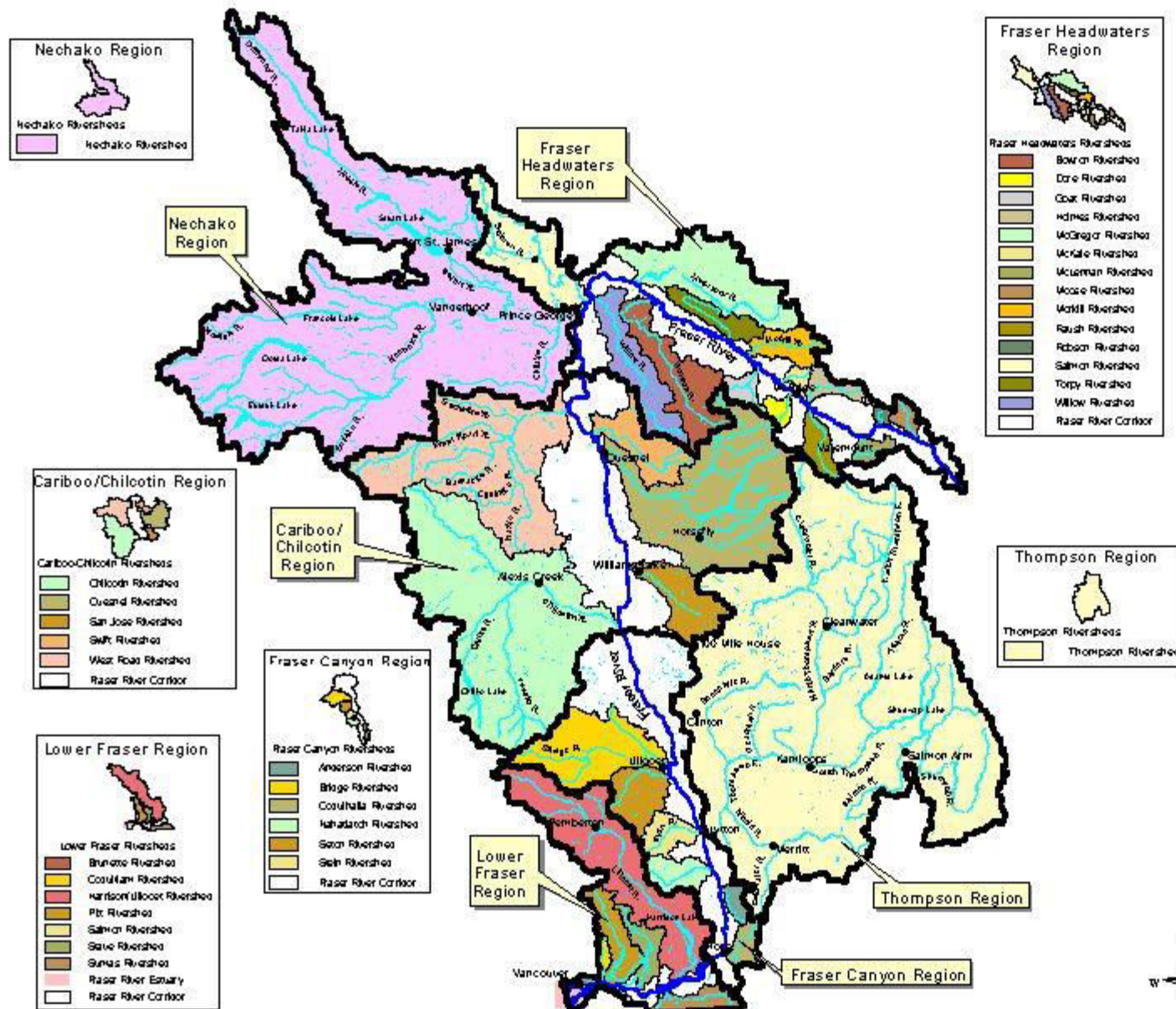
- Cities/Towns
- Fraser River
- Rivers
- Lakes

Regions

- Fraser Headwaters
- Nechako
- Cariboo-Chilcotin
- Thompson
- Fraser Canyon
- Lower Fraser

Data Source: Watershed Atlas 1:50,000
 Scale: as shown
 Projection: BC Albers
 Prepared By: Galiano Institute for
 Environmental and Social Research
 For: Watershed Society of BC
 Date Prepared: Sept 04, 2003

Regions and Riversheds of the Fraser River Basin



Data Source: Watershed Atlas 1:50,000
 Scale: as shown
 Projection: BC Albers
 Prepared By: Galiana Institute for
 Environmental and Social Research
 For: Rivershed Society of BC
 Date Prepared: Sept 04, 2003





Regions of the Fraser River Basin



Fraser River Basin



Legend

-  Cities/Towns
 Fraser River
 Rivers
 Lakes

Regions

- | | |
|---|-------------------|
|  | Fraser Headwaters |
|  | Nechako |
|  | Cariboo-Chilcotin |
|  | Thompson |
|  | Fraser Canyon |
|  | Lower Fraser |

Data Source: Watershed Atlas 1:50,000
Scale: as shown
Projection: BC Albers
Prepared By: Galiano Institute for
Environmental and Social Research
For: Rivershed Society of BC
Date Prepared: Sept 04, 2003

Entire River Basin

- Climate Change

(warming streams, receding
snow pack)

Fraser Headwaters & Nechako Regions:

- Clearcut Logging
- Pulp Mill Effluent
- Dams (for aluminum production)
- Urbanization

Regions of the Fraser River Basin



Fraser River Basin



Legend

-  Cities/Towns
 Fraser River
 Rivers
 Lakes

Regions

- | | |
|---|-------------------|
|  | Fraser Headwaters |
|  | Nechako |
|  | Cariboo-Chilcotin |
|  | Thompson |
|  | Fraser Canyon |
|  | Lower Fraser |

Data Source: Watershed Atlas 1:50,000
Scale: as shown
Projection: BC Albers
Prepared By: Galiana Institute for
Environmental and Social Research
For: Rivershed Society of BC
Date Prepared: Sept 04, 2003

Cariboo Chilcotin Region:

- Mining (e.g. Mount Polley)
- Ranching (water withdrawals)

Regions of the Fraser River Basin



Fraser River Basin



Legend

-  Cities/Towns
 Fraser River
 Rivers
 Lakes

Regions

- | | |
|---|-------------------|
|  | Fraser Headwaters |
|  | Nechako |
|  | Cariboo-Chilcotin |
|  | Thompson |
|  | Fraser Canyon |
|  | Lower Fraser |

Data Source: Watershed Atlas 1:50,000
Scale: as shown
Projection: BC Albers
Prepared By: Galiano Institute for
Environmental and Social Research
For: Rivershed Society of BC
Date Prepared: Sept 04, 2003

Fraser Canyon Region:

- Trains (e.g. CP, CN)
- Hells Gate (blasting blocked the river)

Regions of the Fraser River Basin



Fraser River Basin



Legend

-  Cities/Towns
 Fraser River
 Rivers
 Lakes

Regions

- | | |
|---|-------------------|
|  | Fraser Headwaters |
|  | Nechako |
|  | Cariboo-Chilcotin |
|  | Thompson |
|  | Fraser Canyon |
|  | Lower Fraser |

Data Source: Watershed Atlas 1:50,000
Scale: as shown
Projection: BC Albers
Prepared By: Galiano Institute for
Environmental and Social Research
For: Rivershed Society of BC
Date Prepared: Sept 04, 2003

Lower Fraser Region:

- Agriculture
- Gravel Extraction
- Industrialization
- Urbanization (traffic, CSOs)

Fraser River Estuary:

Proposed Industrial Projects:

- Kinder Morgan Pipeline
- Tilbury LNG
- YVR Jet Fuel Storage
- Fraser Surrey Docks Coal Port
- Roberts Bank Terminal 2 Port expansion

Cumulative Impacts:

Who is assessing the combined impacts of pollution, habitat loss & climate change

Solutions:

1. Raise awareness (of problems & solutions)
2. Educate (show how change is possible)
3. Public Policy (there must be the political will)
4. Best Practises (good land & water management)

Rivershed Society of BC

Vision: Salmon flourishing in rivers; People flourishing in communities.

Rivershed Society of BC

Goal: Build a network of **sustainability champions** within the Fraser River Basin, who will conserve, protect & restore rivershed health.

Sustainable Living Leadership Program:





Fraser FEST

Celebrate your watershed.

September 4 - 27, 2015



Rivershed
Society of BC

is proud to present:

Fraser FEST elements:

1. Rafting the **Fraser Canyon**
2. Paddling, Cycling & Walking the **Lower Fraser**
3. Community music festivals

Fraser FEST aims to ...

1. Connect people to nature
2. Increase understanding of Watersheds
3. Encourage Watershed CPR
4. Demonstrate Watershed Leadership

Transitioning to a **sustainable way of living** requires the development of a strong **environmental ethic**



Thank you

Everyone lives in a watershed. Come celebrate yours.

www.rivershed.com

